



# DS1410E Parallel Port Adapter

[www.dalsemi.com](http://www.dalsemi.com)

## FEATURES

- Provides a parallel port interface for Dallas iButtons
- Compatible with low-power parallel ports
- No external power required
- Operates with DOS, Windows, Windows 95, Windows NT, SCO UNIX, UNIXWARE, and HP\_UX for workstations

## DESCRIPTION

The DS1410E Parallel Port Adapter interfaces Dallas Semiconductor Authorization iButtons to host computers via a PC parallel port. In conjunction with the iButton, the DS1410E provides a high security storage vault for critical execution control information. Only users who possess an iButton can utilize the software, preventing execution of unauthorized copies.

The modularity of the DS1994 allows for easy feature customization. The device supports the insertion of two iButtons, which can be removed and replaced to vary functionality.

For example, a DS1994 Time iButton can be programmed for a 30-day expiration, issued with a DS1410E and a software copy. The evaluator can be converted into a registered user by issuing a DS1991 Multi iButton and inserting it into the second receptacle. The DS1410E supports the same iButtons as other Dallas port adapters. This allows standardization of any protection scheme across virtually all hardware platforms, regardless of the operating system. The iButtons remain constant, and the port adapters change according to the specific platform interface.

## DS1410E SOFTWARE

The DS1410k Development Kit contains access system software which must be linked with the application software in order to complete integration. The support for the application development environments and operating systems lies in the interface software of the access system. The access system contains the low-level interface for communicating with the iButtons.

## OPERATION

The DS1410E utilizes a DS1481 1-Wire™ Bus Master to communicate with iButtons. The DS1481 generates either a read/write bit “time slot” or a reset on the I/O pin (1-Wire bus). The operation performed is determined by the states of input pins 2 and 3 on the port adapter as follows:

TIME SLOT	PIN 2	PIN 3
Read 0, Read1, Write 1	logic high	logic high(see Figure 1)
Write 0	logic low	logic high (see Figure 2)
1-Write Reset	logic high	logic low (See Figure 3)

After input pins 2 and 3 have been set, the time slot begins by driving input pin 14 to its active state (low). A falling edge on input pin 14 causes the DS1481 to drive input pins 11 and 13 low (indicating a time slot is in progress).

While input pins 11 and 13 are low, the host processor is free to perform other tasks (including running the print spooler). When the time slot is complete input pins 11 and 13 are restored to the states of output pins 11 and 13.

When the host detects that one or both of the busy signals has returned high, it must query the result of the time slot. This is accomplished by driving input pin 2 low. If the 1-Wire bus was low (read 0, write 0, or presence detect) the DS1481 drives both input pins 11 and 13 low (this state was held until input pins 14 or 2 return high). Otherwise it propagates the states of output pins 11 and 13.

After the host reads the time slot result it must drive input pin 14 to its inactive state (high). The DS1481 will then set input pins 11 and 13 to the state of output pins 11 and 13.

## DS1410E 1-WIRE TIMING GENERATION

For all time slots, the DS1481 samples the I/O pin at  $t_{SIO}$  (see Figure 3). The DS1481 waits a minimum of 60  $\mu$ s from the start of the time slot and de-asserts input pins 11 and 13.

When a reset is requested, the DS1481 drives the I/O pin low for at least 480  $\mu$ s and then releases it. During a normal reset the I/O pin immediately begins to return high.

If a 1-Wire device is present on the I/O line it pulls I/O low after time T ( $15 \mu\text{s} \leq T \leq 60 \mu\text{s}$ ) from the previous rising edge. The 1-Wire device(s) holds the I/O line low for 4T and then releases it, allowing the I/O line to return high. This is the presence detect pulse. The I/O line must remain high (in its idle state) for at least 3T before the 1-Wire device(s) is ready for further communication. To insure this idle high time is satisfied, the DS1481 does not release input pins 11 and 13 for at least 960  $\mu$ s (measured from the 1<sup>st</sup> falling edge on the I/O pin).

If after 480  $\mu$ s of low time the I/O line did not return high, either the I/O line has been shorted to ground or there is at least one 1-Wire device connected to the I/O line which is issuing an alarm interrupt (see Figure 3). In this case the DS1481 waits for I/O to return high for an additional 3840  $\mu$ s ( $64 * 60$ ). If time expires the I/O line is assumed to be shorted and the DS1481 releases input pins 11 and 13. If the I/O line returns high, the DS1481 continues to monitor the presence detect portion of the reset (as described above) as for the non-interrupt case. Note that the 3T idle high time is still required after the presence detect ends.

## OVERDRIVE

The DS1481 also supports overdrive communication with overdrive capable 1-Wire devices. When the DS1481 powers up it is in normal mode (i.e., OD = 0, Figure 1). To toggle to overdrive mode the host sets input pins 2 and 3 low and drives Input pin 14 low. The DS1481 toggles the OD (OverDrive) bit to a logic high and returns the states of output pins 11 and 13 on input pins 11 and 13. Overdrive mode is cleared in the same way. When Overdrive is turned off (OD = 0). Input pins 11 and 13 are driven low to report the state of the OD bit.

When OD = 1, communication with the 1-Wire devices is exactly as described in the operation section above. The actual 1-Wire timing for both modes of operation is described in figures 1, 2 and 3 below.

Note that when toggling the OD bit there is no change on the I/O line.

---

## PRINTER COEXISTENCE

In order to coexist with parallel port printers, the DS1410E utilizes output pins 11 and 13 and input pins 11 and 13. When input pin 14 is low these pins are used for transmitting data received on the I/O pin or for issuing an unmistakable busy signal. When input pin 14 is inactive (high) input pins 11 and 13 propagate the states of output pins 11 and 13.

If a printer is attached to a DS1410E, output pin 11 is connected to the printers BUSY signal (low only if printer is on-line and busy), and output pin 13 is connected to SELECT OUT (driven low if printer is off-line), see Figure 2.

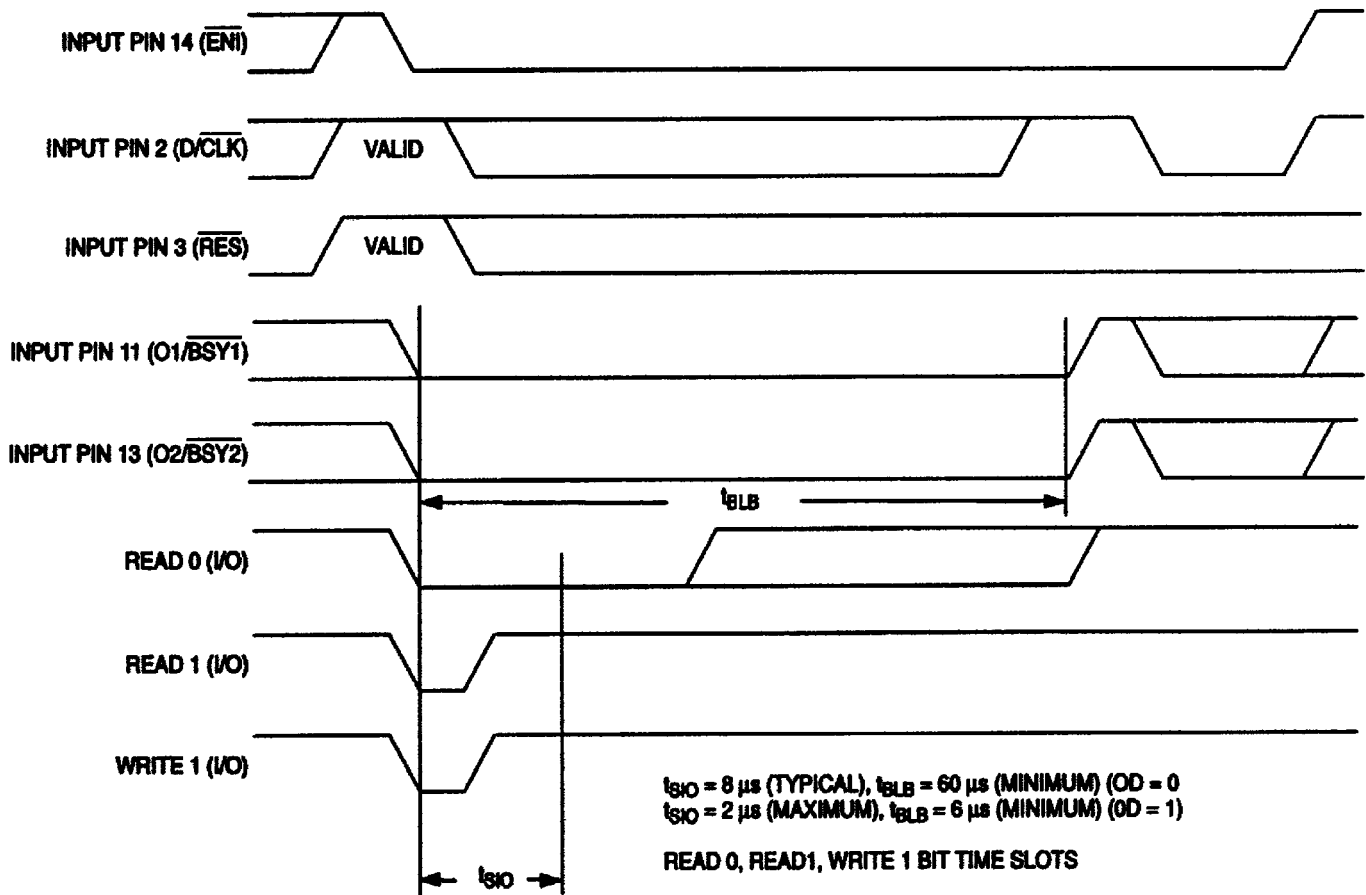
If the attached printer is “powered up” and on-line, the DS1410E uses SELECT OUT for communication regardless of the state of the printers BUSY signal. If the printer is offline its BUSY signal is inactive (high) and this line is used by the DS1410E for host communication.

If the attached printer is powered off, both SELECT OUT and BUSY will be low. This prevents meaningful communication with the DS1410E because it is unable to de-assert its busy signal (input pins 11 and 13 low) or return a high sample of the I/O pin.

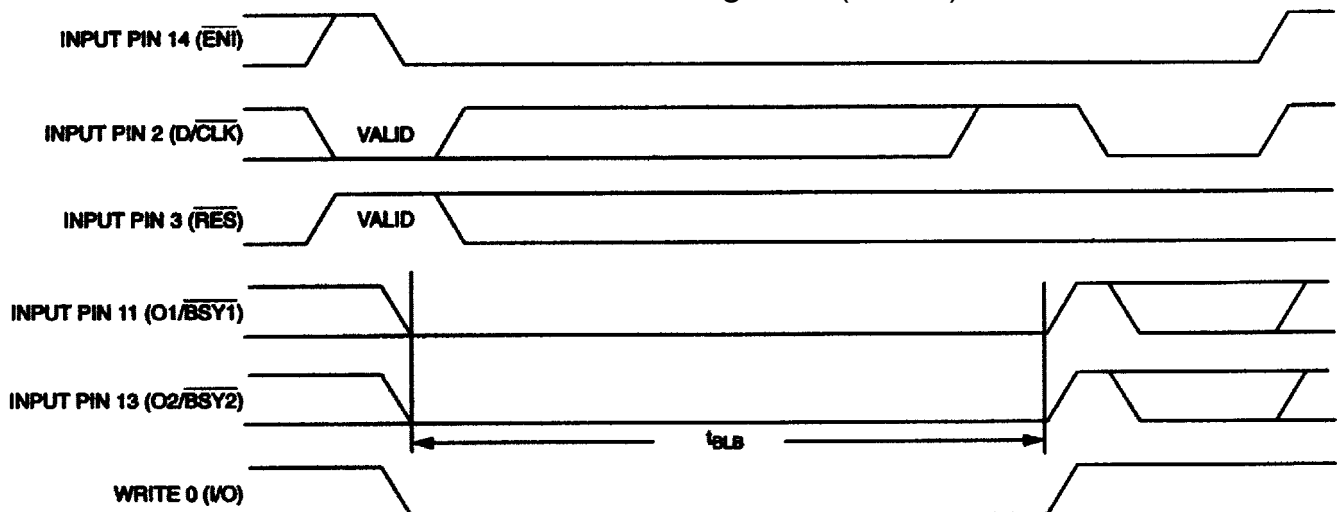
To solve this problem, the DS1481 uses the busy signal issued during a reset to detect the presence of another DS1481 based device attached behind it on the parallel port. If this busy signal is not detected by the DS1481, it assumes that it is the last DS1481 based device on the port.

If the DS1410E determines that it is the last device on the port it ignores the states of output pins 11 and 13 while input pin 14 is low. It also leaves the output pin 14 high to prevent sending line feed signals to the printer. This gives the last device the ability to control input pins 11 and 13 without affecting stackability.

## HOST INTERFACE TIMING DIAGRAMS Figure 1



## HOST INTERFACE TIMING DIAGRAMS Figure 2 (cont'd)

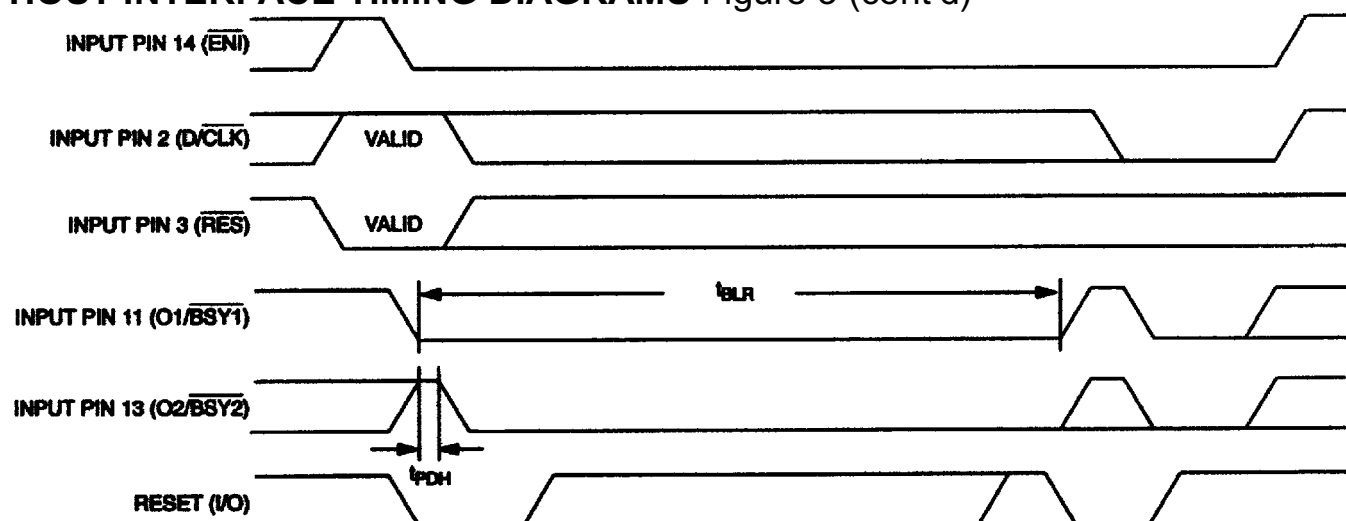


$t_{BLB} = 60 \mu s$  (MINIMUM) (OD=0)

$t_{BLB} = 6 \mu s$  (MINIMUM) (OD=1)

WRITE 0 TIME SLOTS

## HOST INTERFACE TIMING DIAGRAMS Figure 3 (cont'd)


 $t_{\text{PDH}} = 2 \mu\text{s}$  (TYPICAL)

 $t_{\text{BLR}} = 960 \mu\text{s}$  (MINIMUM) (OD = 0)

 $t_{\text{BLB}} = 96 \mu\text{s}$  (MINIMUM) (OD = 1)

## 1- WIRE RESET

PIN	I/O	DESCRIPTION
Input pin 14 ( $\overline{\text{ENI}}$ )	I	Chip enable, driven low to begin 1-Wire I/O.
Input pin 11 ( $\text{O1}/\overline{\text{BSY1}}$ )	O	Driven low during time slot (to indicate a DS1481 busy condition). Set to state of I1 after time slot has finished. ( $\text{O1}/\overline{\text{BSY1}}$ ) will go low after $\text{D}/\overline{\text{CLK}}$ goes low if sample of I/O communication was low. Returns to state I1 when $\overline{\text{ENI}}$ goes back high (see Figure).
Input pin 13 ( $\text{O2}/\overline{\text{BSY2}}$ )	O	Driven low during time slot (to indicate a DS1481 busy condition). Set to state of I2 after time slot has finished. $\text{O2}/\overline{\text{BSY2}}$ will go low after $\text{D}/\overline{\text{CLK}}$ goes low if sample of I/O communication was low. Returns to state of I2 when $\overline{\text{ENI}}$ goes back high (see Figure).
Input pin 2 ( $\text{D}/\overline{\text{CLK}}$ )	I	Data/Clock pin. Used to specify type of time slot before communication begins. After the time slot has been completed this pin is driven low in order to solicit the result of the time slot.
Input pin 3 ( $\overline{\text{RES}}$ )	I	Set low (before $\overline{\text{ENI}}$ is driven low) to specify that a reset pulse should be generated on the I/O pin.
Output Pin 11 (I1)	I	Can be connected to the $\text{O1}/\overline{\text{BSY1}}$ of another DS1481. May also be connected to a parallel port printer's BUSY signal. Internally pulled high via a weak resistor.
Output Pin 13 (I2)	I	Can be connected to the $\text{O2}/\overline{\text{BSY2}}$ of another DS1481. Can also be connected to a parallel port printer SELECT OUT signal. Internally pulled high via a weak resistor.
Output Pin 14 ( $\overline{\text{ENO}}$ )	O	Set to $\overline{\text{ENI}}$ if not the last part on port. Open drain output with weak internal pullup resistor.
I/O	I/O	1-Wire I/O line. Bi-directional line with open drain output.

**ABSOLUTE MAXIMUM RATINGS\***

Voltage on Any Pin Relative to Ground	-1.0V to +7.0V
Operating Temperature	-40°C to +85°C
Storage Temperature	-55°C to +125°C
Soldering Temperature	260°C for 10 seconds

\* This is a stress rating only and functional operation of the device at these or any other conditions above those indicated in the operation sections of this specification is not implied. Exposure to absolute maximum rating conditions for extended periods of time may affect reliability.

**RECOMMENDED DC OPERATING CONDITIONS**

(0°C to 40°C)

PARAMETER	SYMBOL	MIN	TYP	MAX	UNITS	NOTES
Logic 1	$V_{IH}$	2.4		$V_{CC}+0.3$	V	1
Logic 0	$V_{IL}$	-0.3		0.8	V	1
Supply	$V_{CC}$	3.4	5.0	5.5	V	1

**DC ELECTRICAL CHARACTERISTICS**(0°C to 40°C;  $2.7 \leq V_{CC} \leq 5.5$ )

PARAMETER	SYMBOL	MIN	TYP	MAX	UNITS	NOTES
Input Leakage	$I_{II}$	-1		+1	$\mu A$	
Output Leakage	$I_{LO}$	-1		+1	$\mu A$	
$V_{OI}$ @ $I_{SINK} = -2mA$				0.4	V	
Active Current	$I_{CC}$		180	500	$\mu A$	2

**AC ELECTRICAL CHARACTERISTICS: HOST INTERFACE**

PARAMETER	SYMBOL	MIN	TYP	MAX	UNITS	NOTES
Sample Time (for bit time slot, OD = 0) (for bit time slot, OD = 1)	$t_{SIO}$		8	2	$\mu s$	
Recovery Time	$t_{REC}$	1			$\mu s$	
Input Pin 2 (Data) to Input Pin 14 (Enable) Hold	$t_{DE}$	40			$\mu s$	
Input Pin 3 (Reset) to Input Pin 14 (Enable) Hold	$t_{RE}$	40			ns	
Input Pin 2 (Clock) low time	$t_{CI}$	200			ns	
Input Pin 2 (Clock) low to Input pins 11 and 13 valid	$t_{COV}$			200	ns	
Input pins 11 and 13 low time (for bit time slot, OD = 0) (OD = 1)	$t_{BLB}$	60 0			$\mu s$	3
Input pins 11 and 13 low time (for reset time slot, OD = 0) (OD = 1)	$t_{BLR}$	960 96			$\mu s$	4

---

**NOTES:**

1. All voltages are referenced to ground.
2. Measured with outputs open and output pins 11 and 13 high.
3. Minimum time required for 1-Wire bit time slot.
4. Minimum time required for 1-Wire reset time slot.